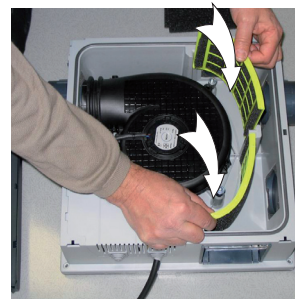
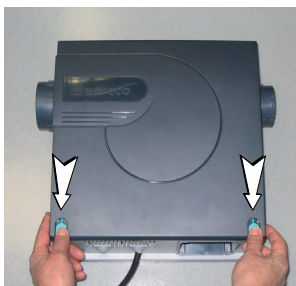


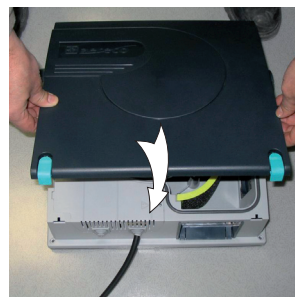
1 – Before any intervention, cut off the fan supply from the circuit breaker.



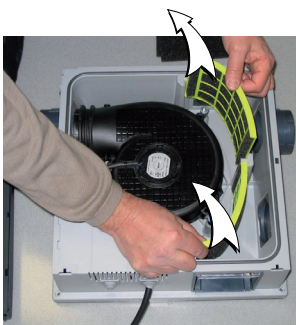
5 – Position back the filter supports.



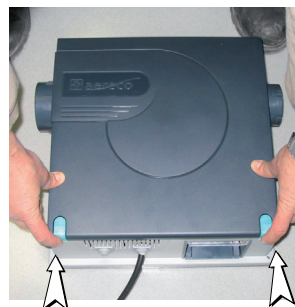
2 – Withdraw the lid.



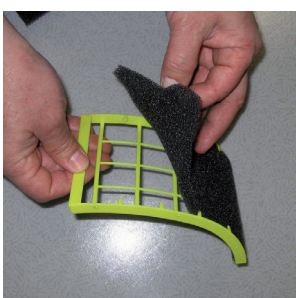
6 – Place the lid.



3 – Withdraw the worn filter supports.

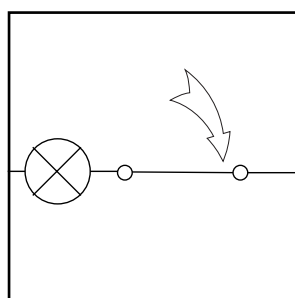


7 – Close the lid.



4 – Replace worn filters by the 2 provided new ones.

Make sure the filters are well set up on their supports in order to avoid leaks.



8 – Engage the circuit breaker in order to supply the fan and check its operation.